

## CCS BOYS UNIFORM INFORMATION

CCS DRESS or CCS CASUAL will be required weekly for chapel and any other specified special events days. On days not specified as CCS DRESS or CCS CASUAL, students may choose from any of the items purchased from DENNIS, our authorized CCS uniform provider.

CCS DRESS includes:

- gray pants
- long sleeve button down
- CHOICE OF vest or blazer
- CHOICE OF neck tie or bow tie

CCS CASUAL includes:

- check shirt
- CHOICE OF pants, shorts or cargo shorts

### CCS DRESS / MANDATORY



long sleeve oxford cloth button down collar with logo

french blue



### CCS CASUAL / MANDATORY



long sleeve broad cloth spread collar checked shirt

navy/white check



### \*CCS DRESS

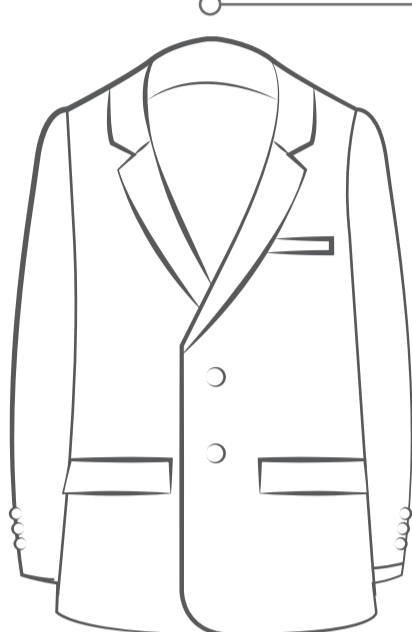


v-neck sweater vest with logo embroidery

navy



### \*CCS DRESS



blazer

navy



\*ONE of these two items, vest OR blazer, is mandatory for CCS DRESS



short sleeve pique knit golf shirt with logo embroidery

- navy
- yellow
- white
- ash



long sleeve pique knit golf shirt with logo embroidery

- navy
- ash



long sleeve fleece 1/4 zip pull-over with logo embroidery

navy



ash



long sleeve letterman sweater with CCS logo

navy w/ white stripes



long sleeve v-neck pull-over sweater with logo embroidery

navy

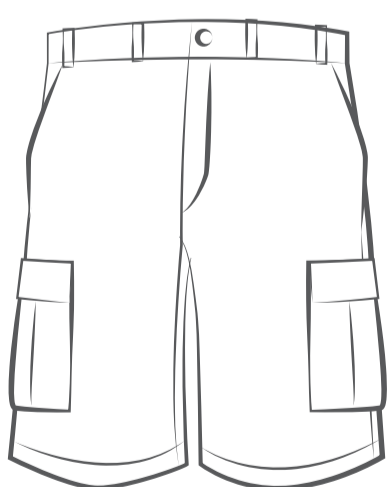


flat front twill casual pant

gray



### \*CCS CASUAL



flat front twill cargo short



### \*CCS CASUAL



flat front twill casual short

navy

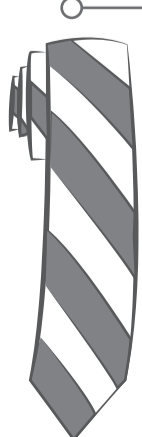


gray



\*ONE pair of solid bottoms, shorts, cargo shorts or a 2nd pair of pants, is mandatory for CCS CASUAL

### \*CCS DRESS

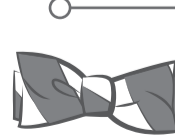


striped neck tie

gold / navy



### \*CCS DRESS



striped bow tie

gold / navy



\*ONE of these two items, neck tie or bow tie, is mandatory for CCS DRESS